

# WORKING PRESSURE

Pressure System Safety Compliance in the coffee trades - Issue 1

January 2016

*This publication is produced by Espress Test, the leading independent supplier of compliance solutions for the coffee trade.*

## A Question of Independence

The Health & Safety Executive (HSE) insist that the Written Scheme of Examination (WSE) and the examination itself must show a degree of independence from existing trading relationships and be fully impartial and not biased towards any operating procedure. For this reason, coffee supply companies, machine supply companies or manufacturers are unlikely to provide Written Schemes of Examination when supplying equipment, even where they have the necessary skills and expertise within their organisation.

When choosing a compliance solution you should consider a few simple things.

### Questions to ask

**Q: Can the examiner prove a degree of independence?**

Are they independent from other operations within their company?

**Q: Does the examiner follow an approved Written Scheme of Examination?**

**Q: Does your examiner hold substantial insurance for both public liability and professional indemnity?**

**Q: Are the methods for compliance suitable?**

The report should contain details of the site and machine and clear results of each part of the examination.

**Q: Are the correct reporting procedures in place?**

**Q: Is the examiner compliant?**

Do they have a risk assessment in place prior to examination?

If you have any detailed questions, Espress Test will always provide advice, freely and without bias.

*“Fabulous service yet again by Espress Test.”*

*“Great service and really helpful. Would recommend. 5\* ”*

*“Espress Test provides the best, most cost-effective solution for our sites nationally”*

*- Espress Test Reviews*



Head Office

### Meet the team:

- Mark Allen - Owner
- Marjan Richards - Admin Assistant
- Gill Swift - Office Manager & UK Operations



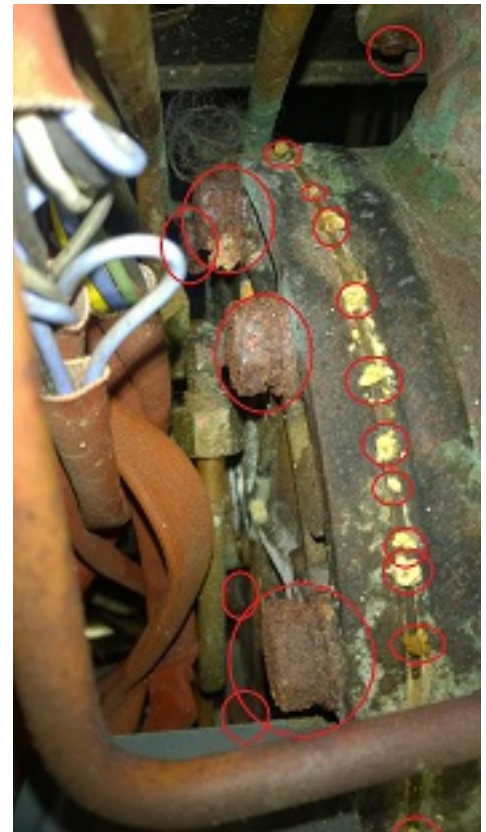
# Potential Imminent Danger

Occasionally we come across a machine that is an outright fail. This Gaggia didn't take much examining to realise it was not going to pass the Pressure Vessel Inspection.

About 1 in 10 machines we inspect for the first time has an issue that could effect the safety for the user. Most often, these can be sorted on site at the same time as the examination e.g. a replacement safety valve.

The boiler end plate bolts on this 15 year old machine are clearly corroded. A combination of sea air and very soft water can expedite the effects of corrosion. Local knowledge can be key when determining these factors.

With the integrity of these fittings compromised, we could not allow this one to pass the compliance examination. The Local Authority issued a prohibition order on the equipment within 24 hours of us notifying them of this potential imminent danger.



## The good, the bad and the foamy

Everyone loves a good New Years Resolution! Follow Gill on her journey into learning how to create latte art.

*"For 2016, I decided to step away from the usual fitness resolutions and consider something more artistic. Feel free to laugh, cheer and even score my efforts over the coming months. I sincerely hope it gets better than this!" - Gill Swift*



*A selection of Gill's first attempts*



## Guess the machine

This will be a regular fixture in our newsletters—feel free to email your guesses. There aren't any prizes, just the satisfaction of knowing you are a serious espresso machine nerd!

*Can you guess the espresso machine just by the picture on the left?*

## Contact Us

### Espress Test

7a Cardrew Industrial Estate, Redruth, Cornwall, TR15 1SS

(01209) 216847

[admin@espresstest.co.uk](mailto:admin@espresstest.co.uk)

[www.espresstest.co.uk](http://www.espresstest.co.uk)